









# R-BOX-AT

rugged box pc

Fanless Intel® Atom™ Rugged Box PC  
with Intel® ICH7-M Chipset



-  COMPACT DESIGN
-  WIDE TEMP / VOLTAGE
-  FAST SERVICE / SUPPORT
-  DUAL GIGABIT ETHERNET
-  ANTI VIBRATION / SHOCK
-  FANLESS

1  
R-PPC  
Series

2  
SR-PPC  
Series

3  
SR-LAP  
Series

4  
R-LAP  
Series

5  
R-BOX  
Series

6  
R-HD  
Series

7  
SR-HD  
Series

8  
Accessories

9  
Mounting

10  
Wireless

11  
Index

## Tactile R-BOX-AT

The R-BOX-AT series is a rugged box pc series which is used in vehicles, industrial machines, and military equipments. The R-BOX-AT series is anti-vibration/shock certified and wide temperature bearable. Its modular concept and exclusively mechanical design facilitate conveniences for users. The fanless structure of thermal design contains passive aluminum heat dissipation fins on top of chassis. Inside a 3.5-inch single-board-computer and hard disk are put in horizontal way to improve the cooling efficiency. These not only reduce material wastage, but also prolong product lifetime.

## Durable

The reliability and stability of R-BOX-AT systems are certified by industrial product quality tests, including anti-vibration of up to 5 Grms, and anti-shock of up to 50 Grms tests. The CF slot comes with a secure metal piece to prevent loose. Using a lockable or industry-grade Phoenix Type power connector plug supports a stable +9V to +32V wide voltage input (optional). These conditions include using computer in industrial equipments and machines like lifting gantry or forklift; on land transportations such as trains, thus extending and diversifying its applications.

## Application environments

Manufacturing  
Transportation

Waste vehicles  
Harbors

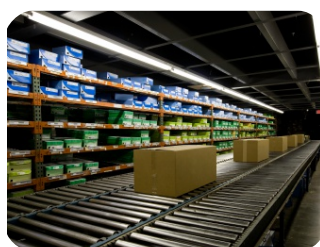
Warehouse & Logistics  
Trucks & forest vehicles

## Operating systems

- Windows XP Professional
- Windows XP Embedded
- Linux

## Features

- R-422/485
- 2.5" HDD SLOT
- Wifi 802.11b/g
- Fanless
- No moving parts
- Dual gigabit ethernet





## CPU & Memory

### CPU

Intel Atom N270 1.6 GHz with 512K Cache CPU

### Chipset

Intel® ICH7-M

### Memory

One 200-pin DDR2 SODIMM

1GB DDR2 667 SDRAM

2GB DDR2 667 SDRAM (optional)

### SDD

1x Compact flash Type I/II

With cover and eject button

## Storage

### Hard drive

Mounting Kit for One 2.5" HDD (Hidden)

## Display

### Display chip

Intel 945GSE

## I/O Interface

### Serial

2x Serial (COM2 RS-232/422/485)

3x Serial in front (optional)

### USB

5x USB 2.0, Rear 4; Front 1

### Graphics

1x VGA DB15

1x DVI

### Sound

AC 97 Codec Realtek ALC888 Supports 5.1-CH Audio

Mic-in (3.55mm)

Line-in (3.55mm)

Line-out (3.55mm)

### Ethernet

10/ 100/ 1000 Base-Tx Gigabit Ethernet Realtek RTL811C

2x Gigabit RJ45

### Expansion Interface

1x Mini PCIe Slot, Internal (hidden)

## Dimension & Weight

Height 55 mm

Width 271 mm

Depth 150 mm

Weight 2.5 kg

## Power Supply Unit

### Power requirement

12 V

9 - 32V (optional)

### Power Input

100 to 240 VAC / 50 - 60 MHz

### Power Output

12 VDC /5A (Screw Type 60W)

## Environment

### Operating temperature

-10 °C to +50 °C

### Storage temperature

-40 °C to +75 °C

### Humidity

5 - 90 % RH, non condensing

1

R-PPC  
Series

2

SR-PPC  
Series

3

SR-LAP  
Series

4

R-LAP  
Series

5

R-BOX  
Series

6

R-HD  
Series

7

SR-HD  
Series

8

Accessories

9

Mounting

10

Wireless

11

Index