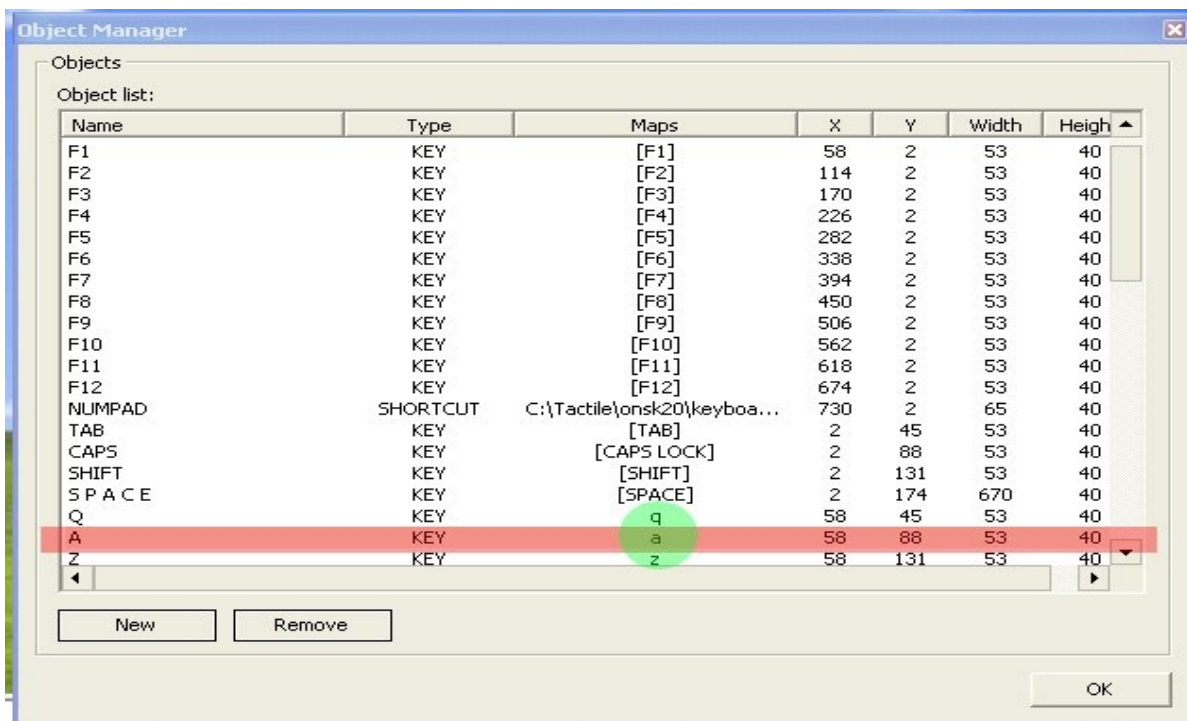


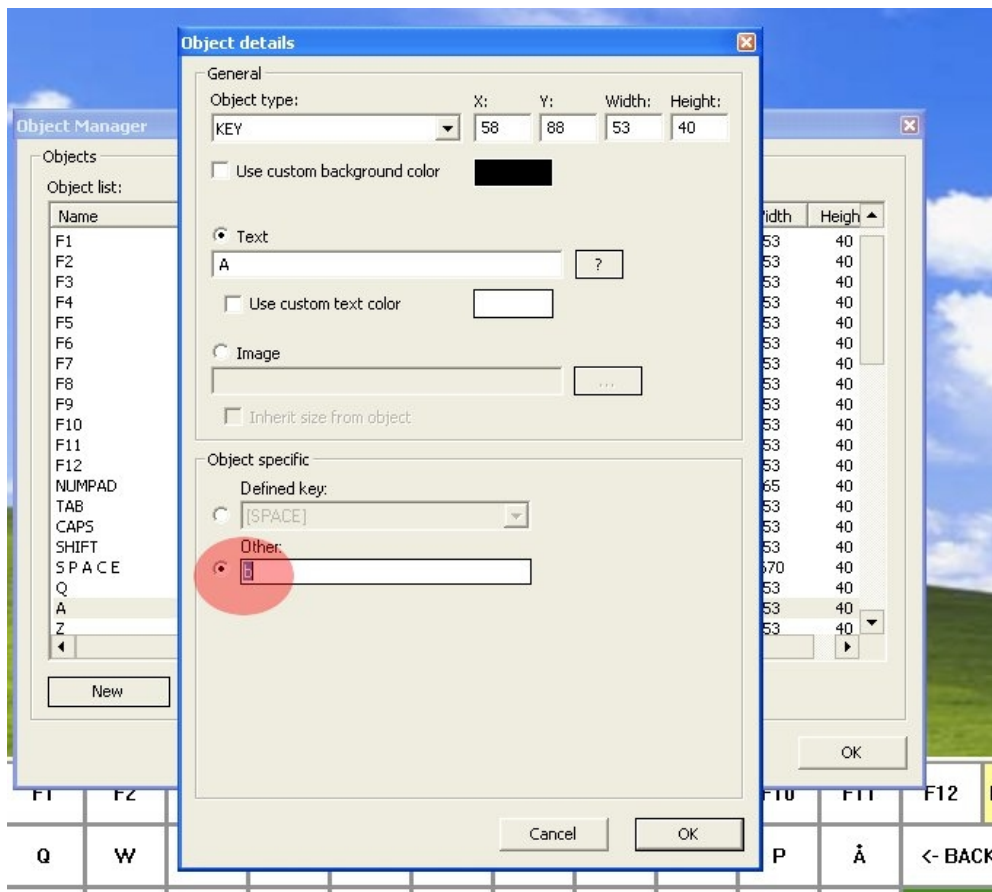
How to change output key of Tactile On Screen Keyboard.



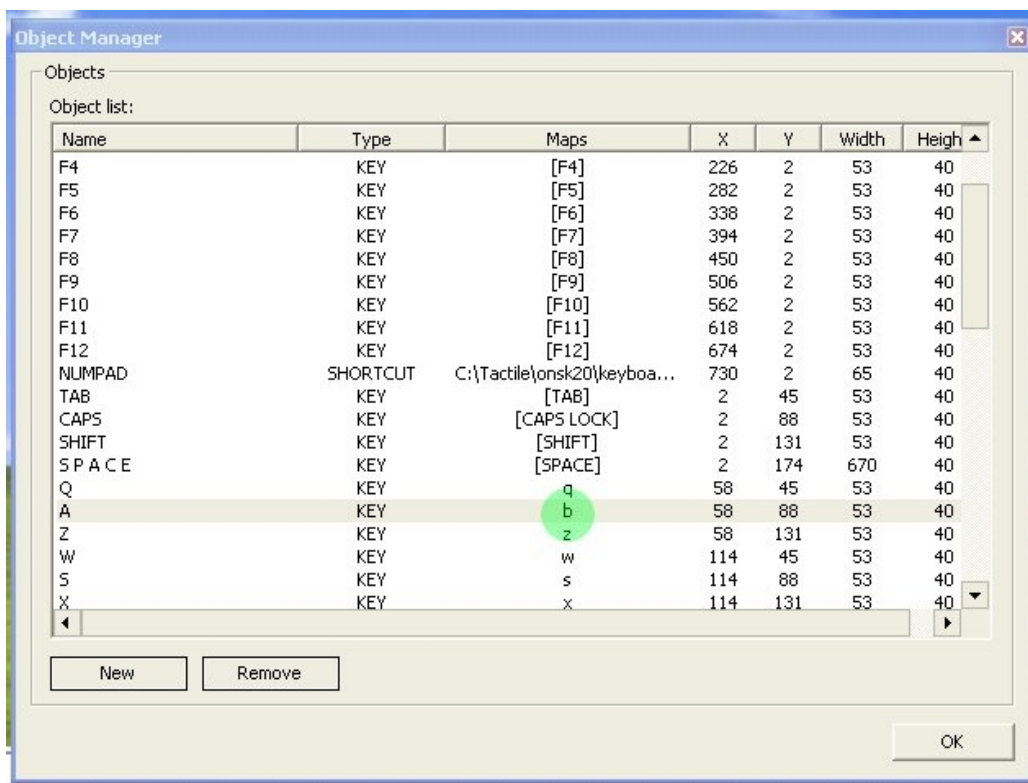
While the on-screen-keyboard is visible press the “hidden key combination” to open the preference menu. The default key combination is CTRL + SHIFT + F7
Select Object Manager from this menu.



Double click the key you want to change
(notice the output character marked in green)



Change the key output by entering the new character in the area marked red, or select a special key from the “Defined key” drop down menu.



Notice that the “Maps” value is changed from the previous output (a) to new output (b)